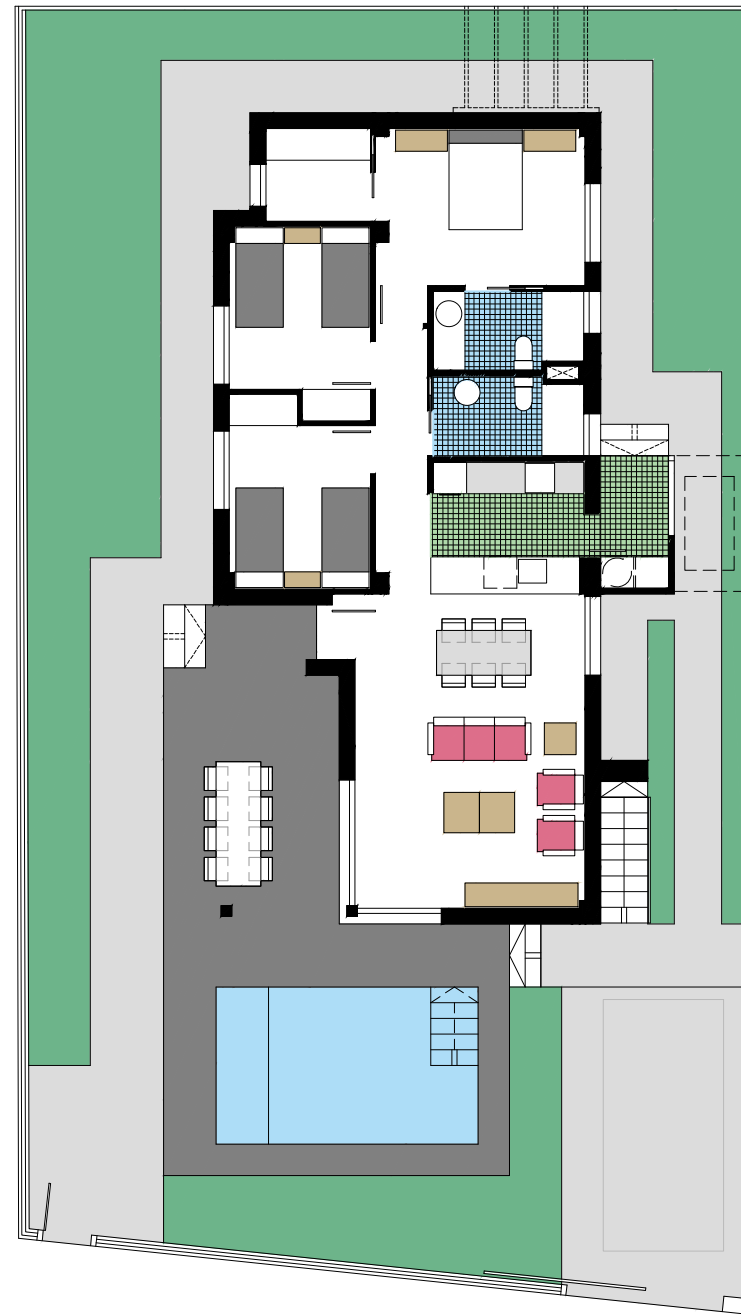


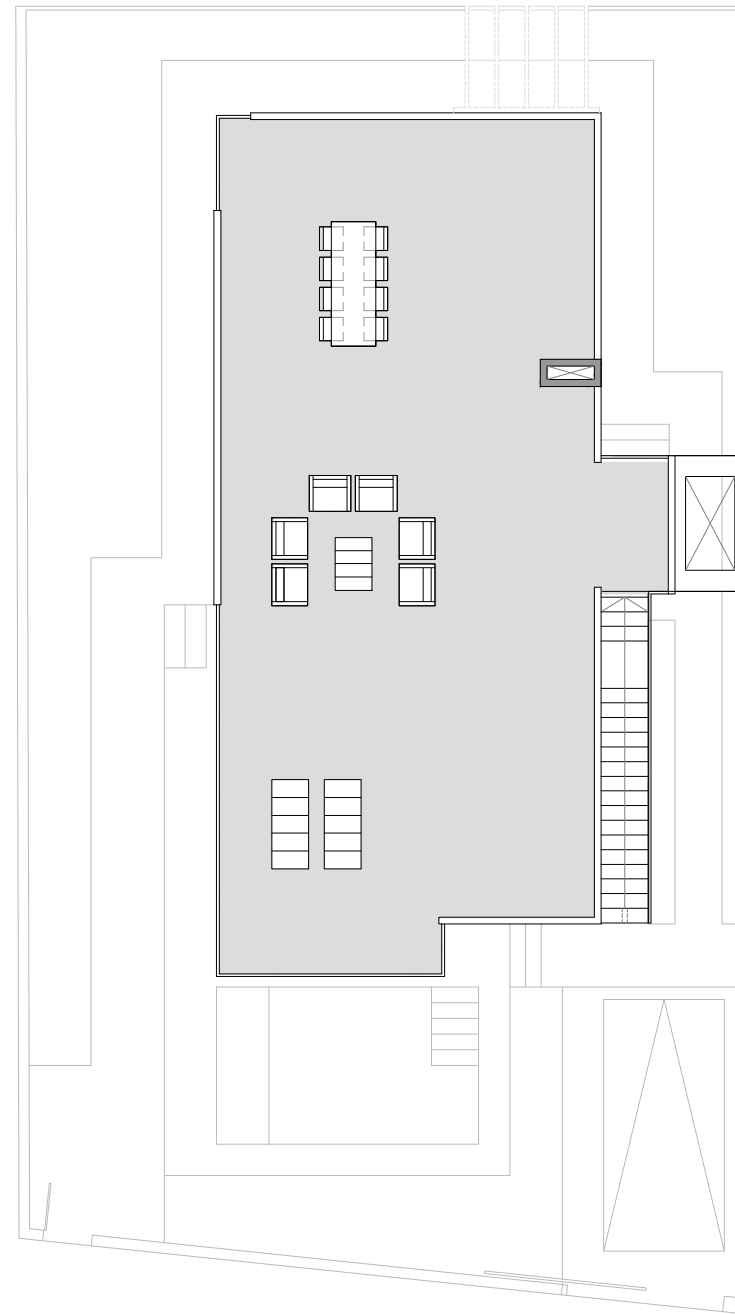
9



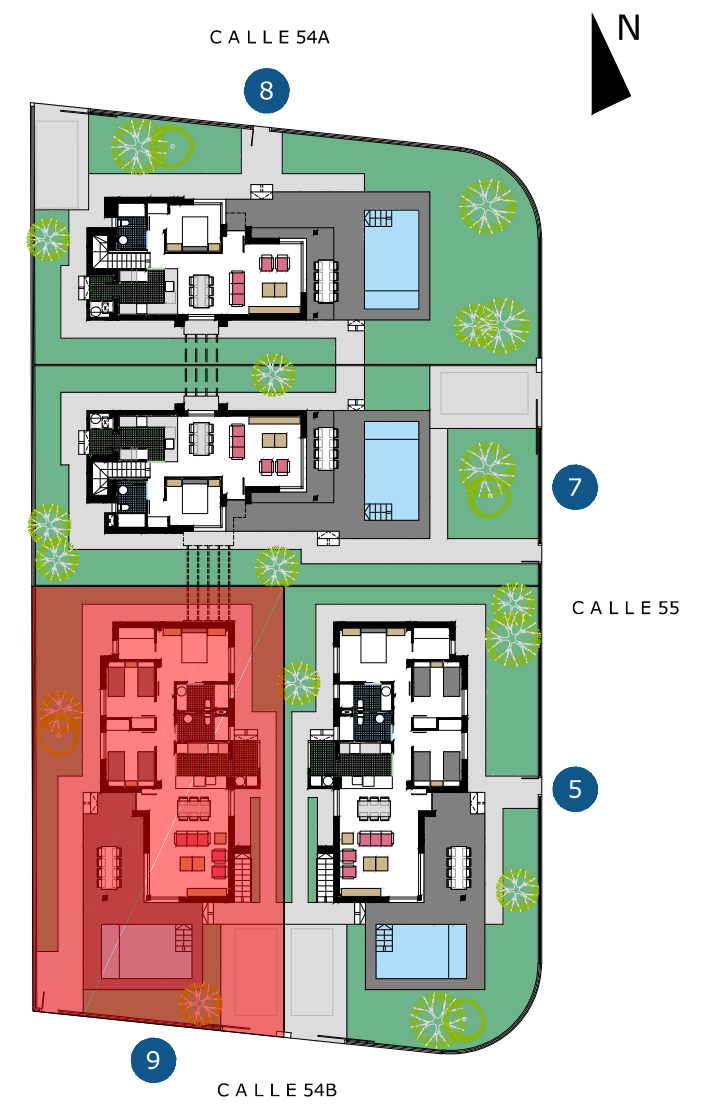
PLANTA BAJA

9

CALLE 54B



SOLARIUM



VIVIENDA N°9

VIVIENDA	99,05 m ²
TERRAZA CUBIERTA	21,21 m ²
GALERIA	3,72 m ²
TOTAL CONSTRUIDA	123,98 m ²
TERRAZA DESCUBIERTA. aprox.	17,46 m ²
SOLARIUM	122,03 m ²
PARCELA PRIVATIVA	336,05 m ²

0 1 2 3 4 5
0,5