

Residencial Garda

AVD.DE ITALIA . MANZANA 7
URB.MIL PALMERAS
PILAR DE LA HORADADA



BLOQUE 4
5.6
PLANTA ALTA

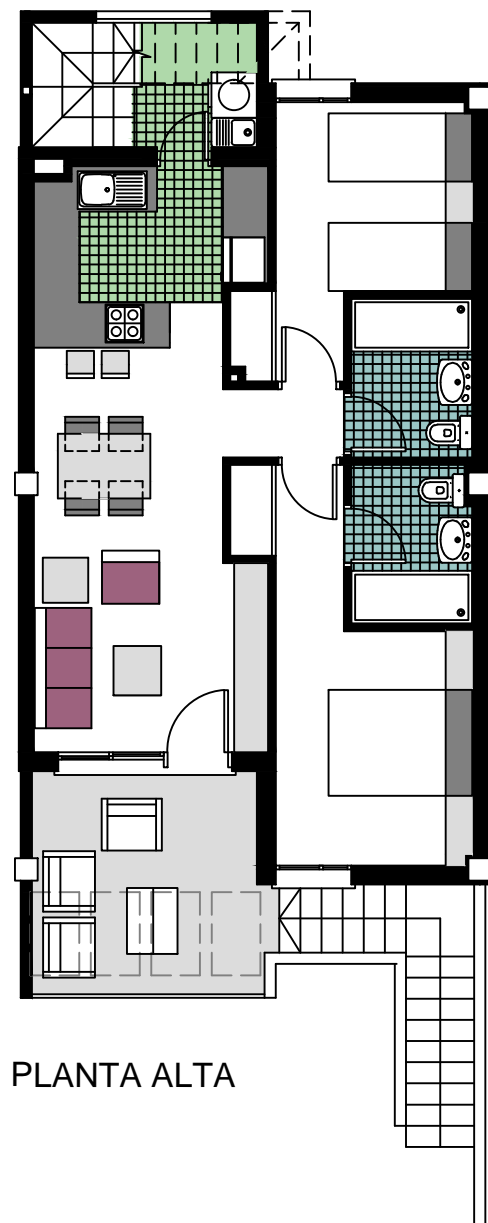
SUPERFICIES APROXIMADAS

VIVIENDA TIPO	56.43
TERRAZA CUBIERTA	4.58
TERRZA DECUBIERTA	4.80
LAVADERO	2.58

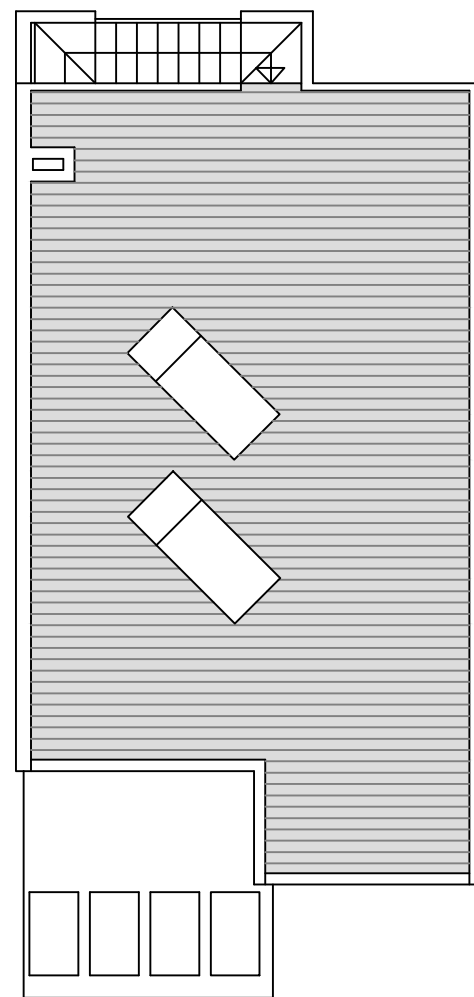
TOTAL SUP.CONSTRUIDA 68.39

+ SOLARIUM 55.38

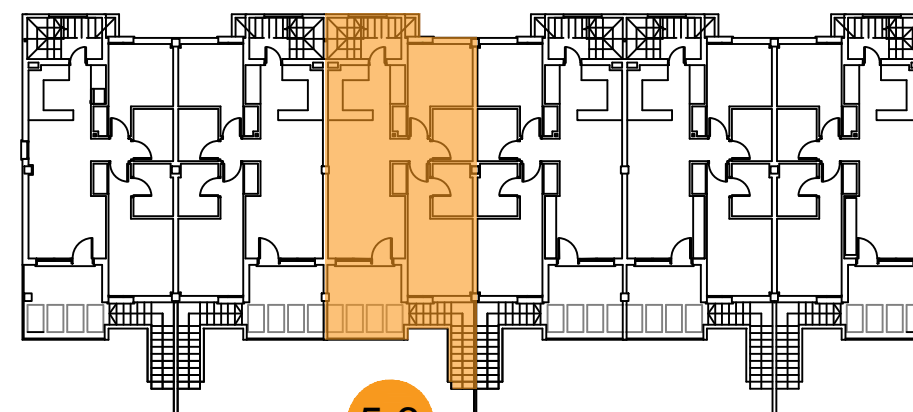
5.6



PLANTA ALTA



SOLARIUM



5.6

