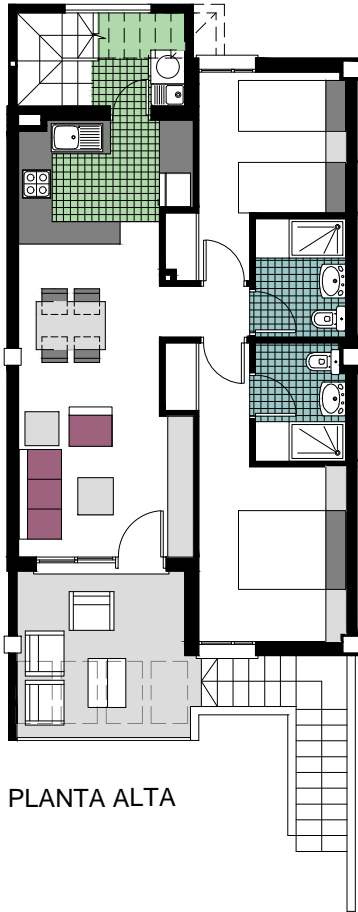
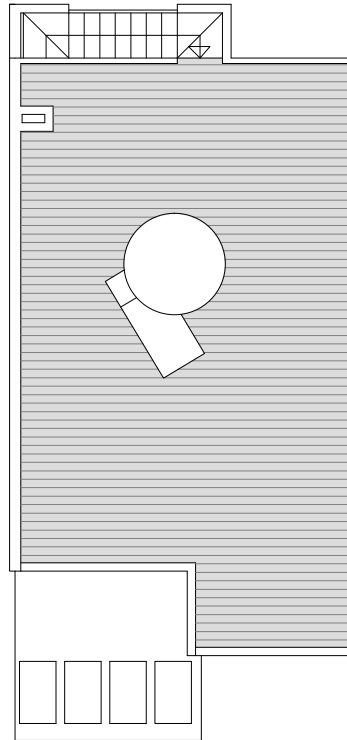


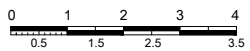
7.6



PLANTA ALTA



SOLARIUM



Residencial
Jarda
Mil Palmeras - Pilar de la Soledad



TIPO B2 (Nº 7.6)

SUPERFICIE CONSTRUIDA

VIVIENDA TIPO	56.43
TERRAZA CUBIERTA	4.58
TERRAZA DESCUBIERTA	4.80
LAVADERO	2.58
TOTAL SUP.CONSTRUIDA	68.39
SOLARIUM	55.38

