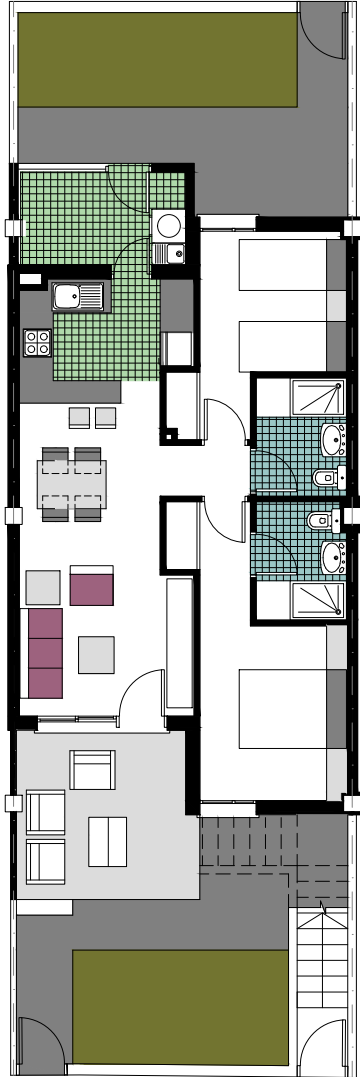
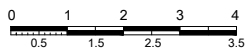


7.9



PLANTA BAJA



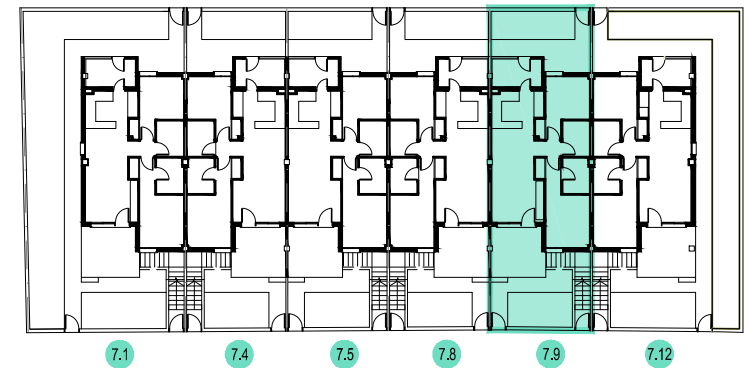
*Residencial*  
*Jarda*  
*Mil Palmeras - Pilar de la Soledad*



TIPO B1 (Nº 7.9)

SUPERFICIE CONSTRUIDA

VIVIENDA TIPO	56.43
TERRAZA CUBIERTA	9.38
LAVADERO	5.62
TOTAL SUP.CONSTRUIDA	71.43
SUP.PARCELA	114.33



7.1

7.4

7.5

7.8

7.9

7.12