

Residencial Garda

AVD.DE HOLANDA . MANZANA 7
URB.MIL PALMERAS
PILAR DE LA HORADADA

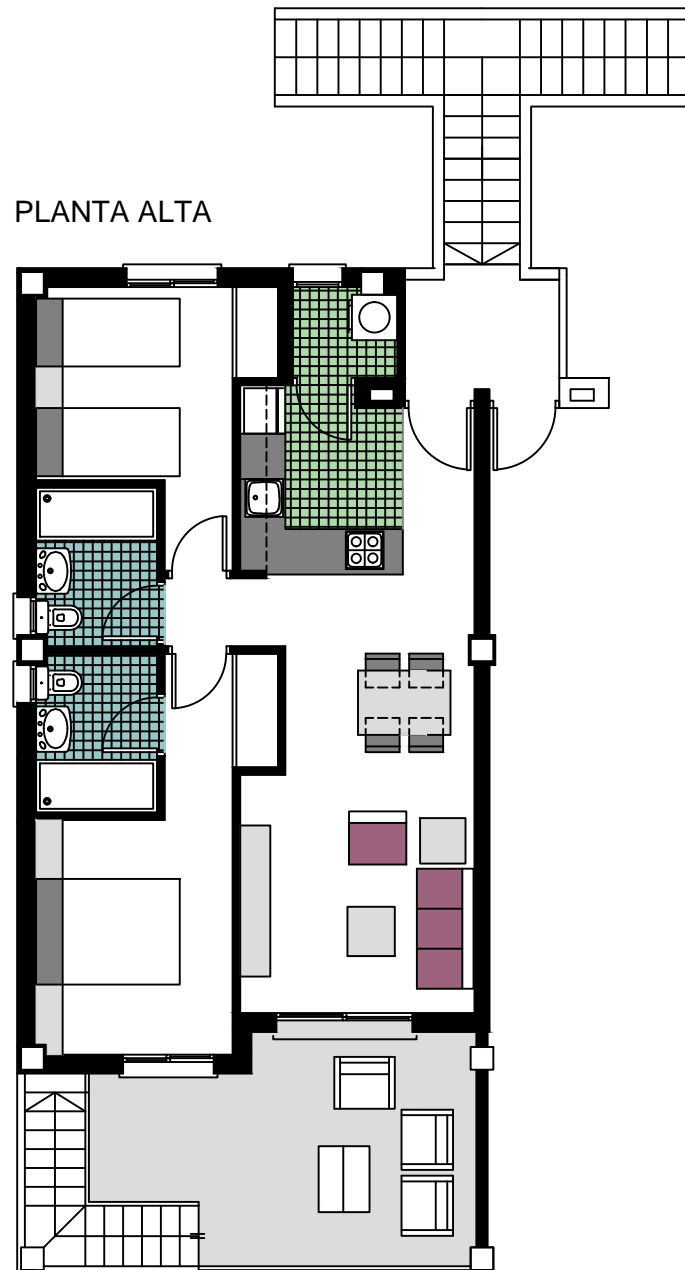


VIVIENDA. Nº 8.10
PLANTA ALTA

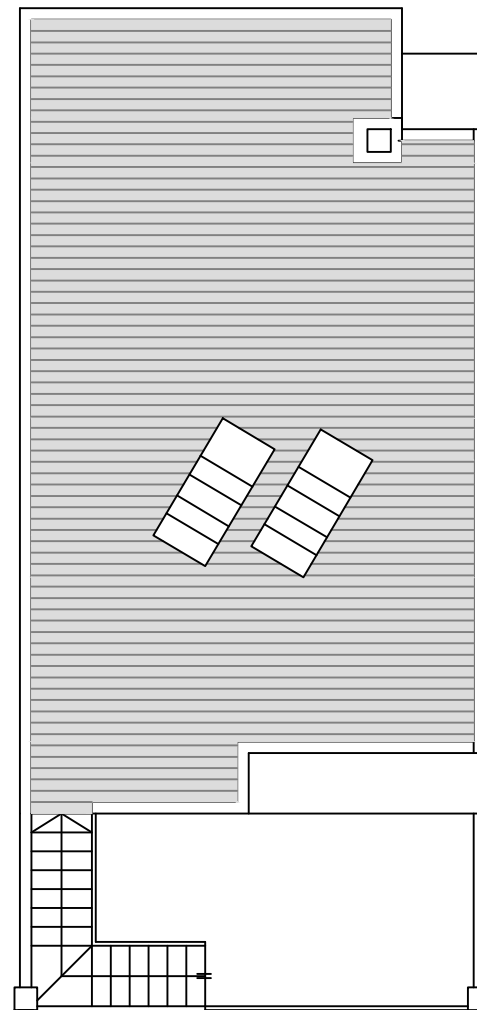
SUPERFICIES APROXIMADAS

VIVIENDA TIPO	58.44
TERRZA DECUBIERTA	13.90
LAVADERO	2.14
<hr/>	
TOTAL SUP.CONSTRUIDA	74.48
<hr/>	
+ SOLARIUM	58.18

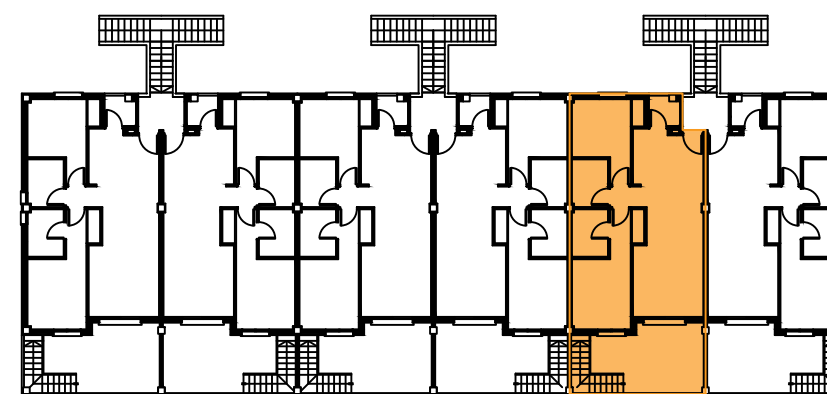
PLANTA ALTA



SOLARIUM



AVD. DE HOLANDA



8.10

