

Residencial Garda

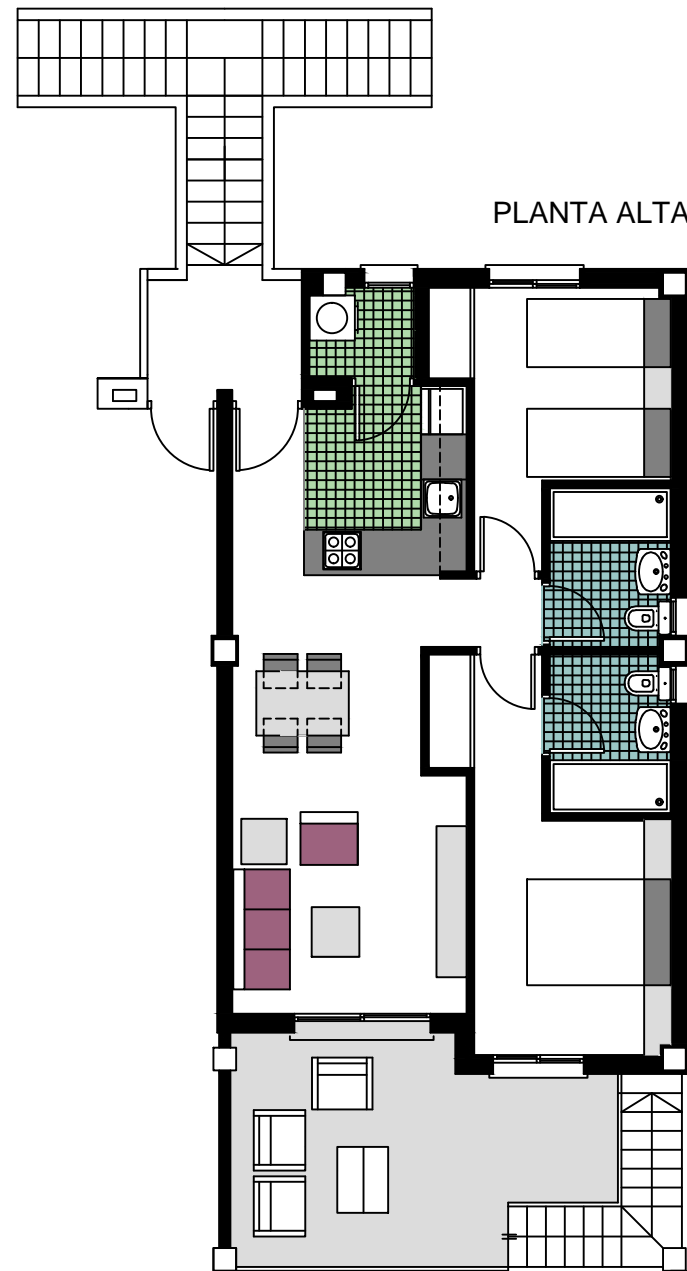
AVD.DE HOLANDA . MANZANA 7
URB.MIL PALMERAS
PILAR DE LA HORADADA



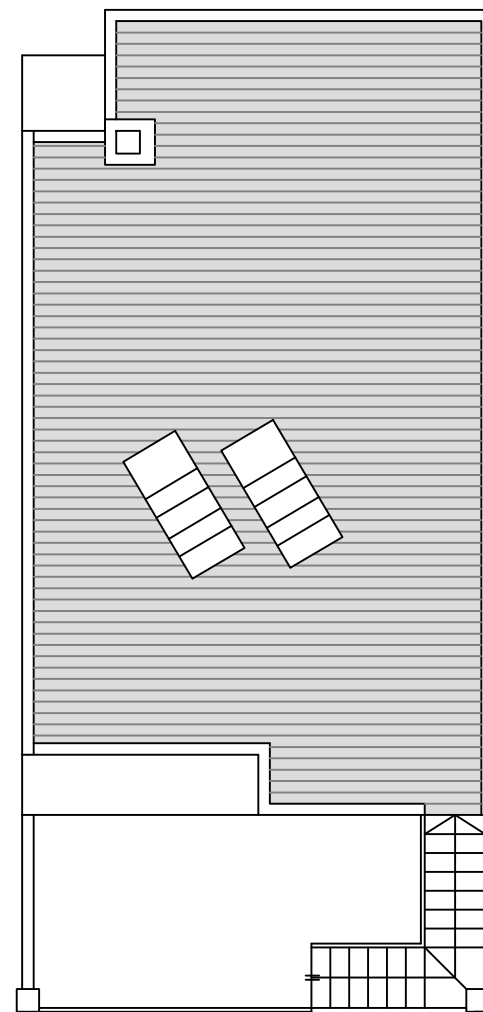
VIVIENDA. Nº 8.11
PLANTA ALTA

SUPERFICIES APROXIMADAS

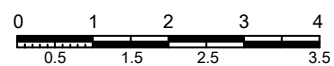
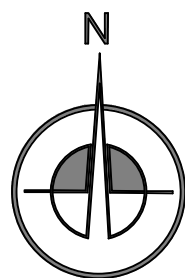
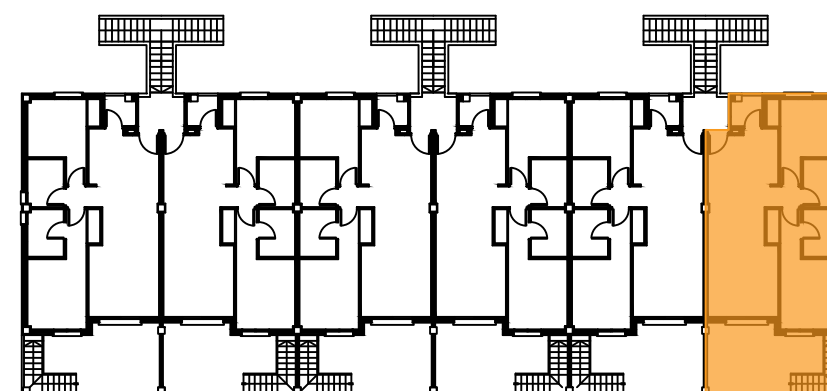
VIVIENDA TIPO	60.04
TERRZA DECUBIERTA	13.90
LAVADERO	2.14
<hr/>	
TOTAL SUP.CONSTRUIDA	76.08
<hr/>	
+ SOLARIUM	58.18



SOLARIUM



AVD. DE HOLANDA



8.11