

# Residencial Garda

AVD.DE HOLANDA . MANZANA 7  
URB.MIL PALMERAS  
PILAR DE LA HORADADA

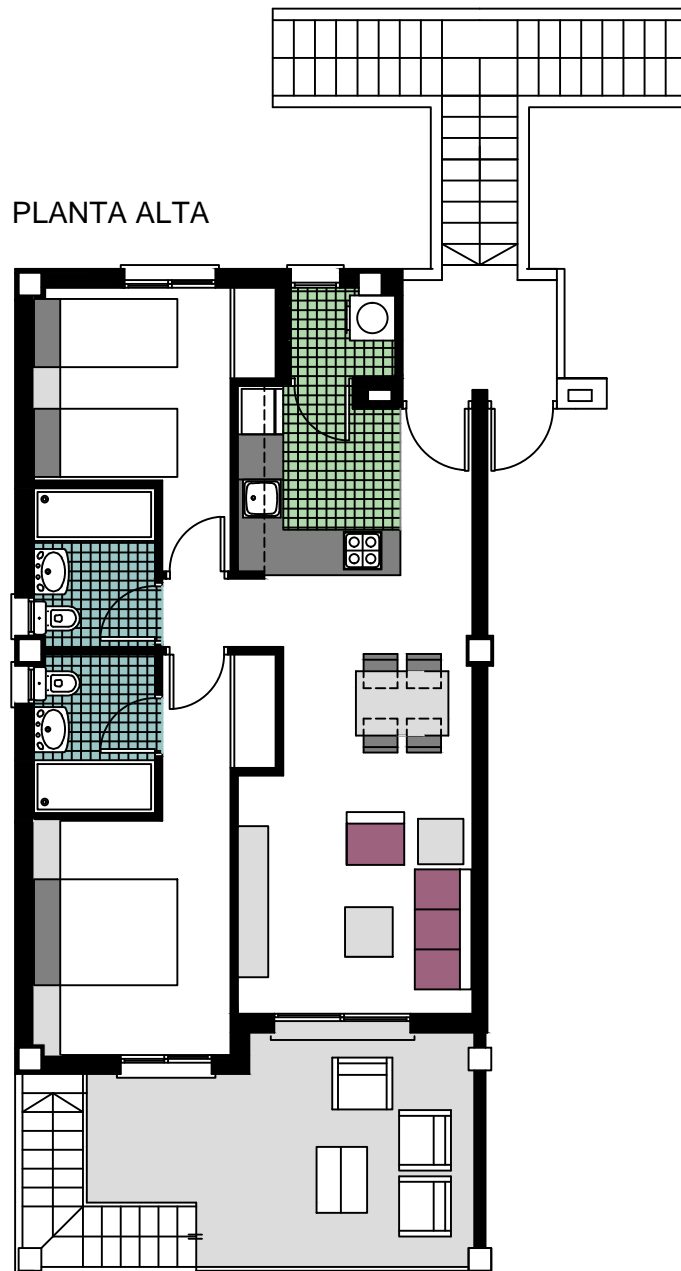


VIVIENDA. Nº 8.2  
PLANTA ALTA

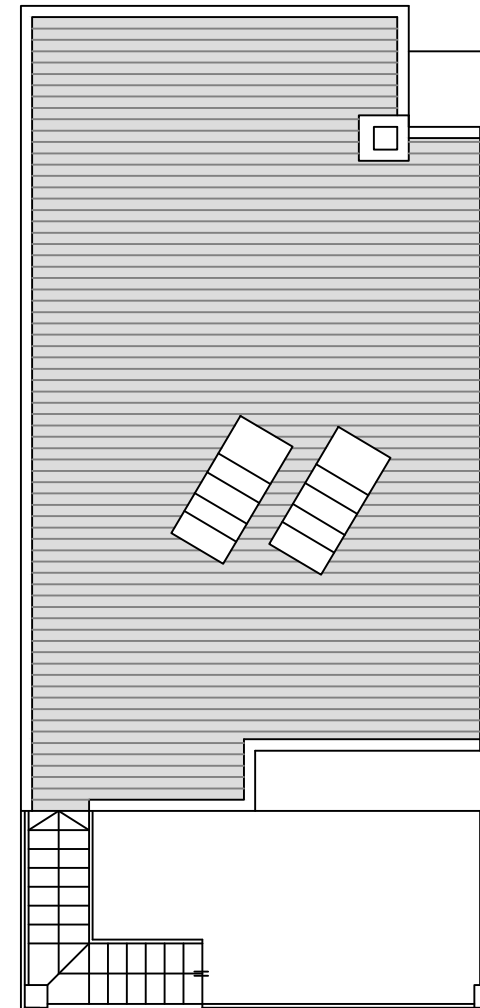
### SUPERFICIES APROXIMADAS

VIVIENDA TIPO .....	60.04
TERRZA DECUBIERTA .....	13.90
LAVADERO .....	2.14
<hr/>	
TOTAL SUP.CONSTRUIDA .....	76.08
<hr/>	
+ SOLARIUM .....	58.18

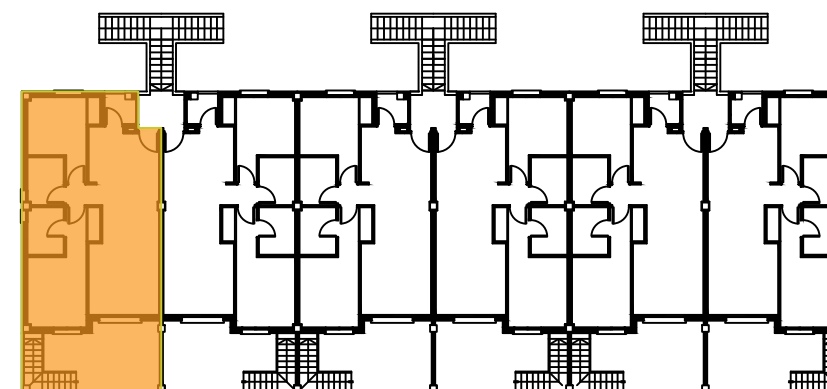
PLANTA ALTA



SOLARIUM



AVD. DE HOLANDA



8.2

