

Residencial Garda

AVD.DE HOLANDA . MANZANA 7
URB.MIL PALMERAS
PILAR DE LA HORADADA



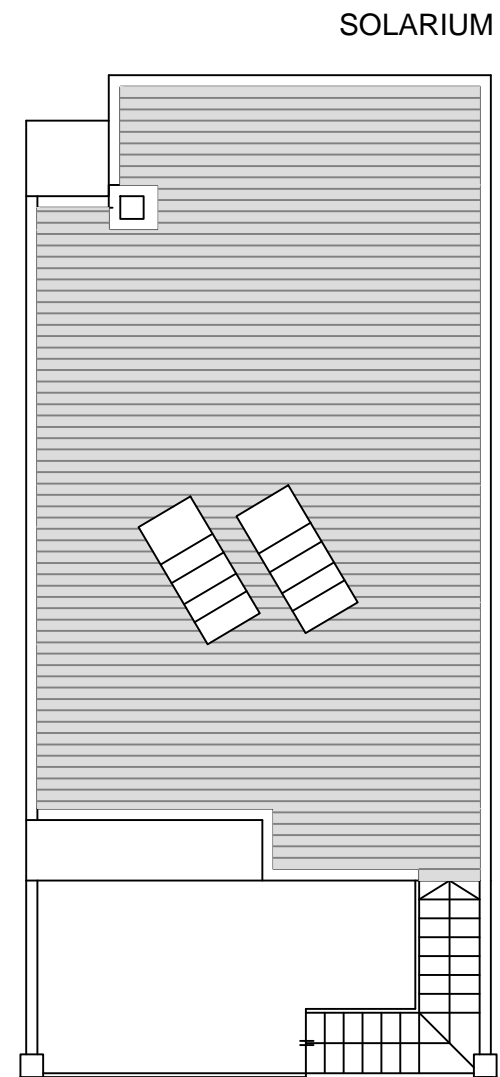
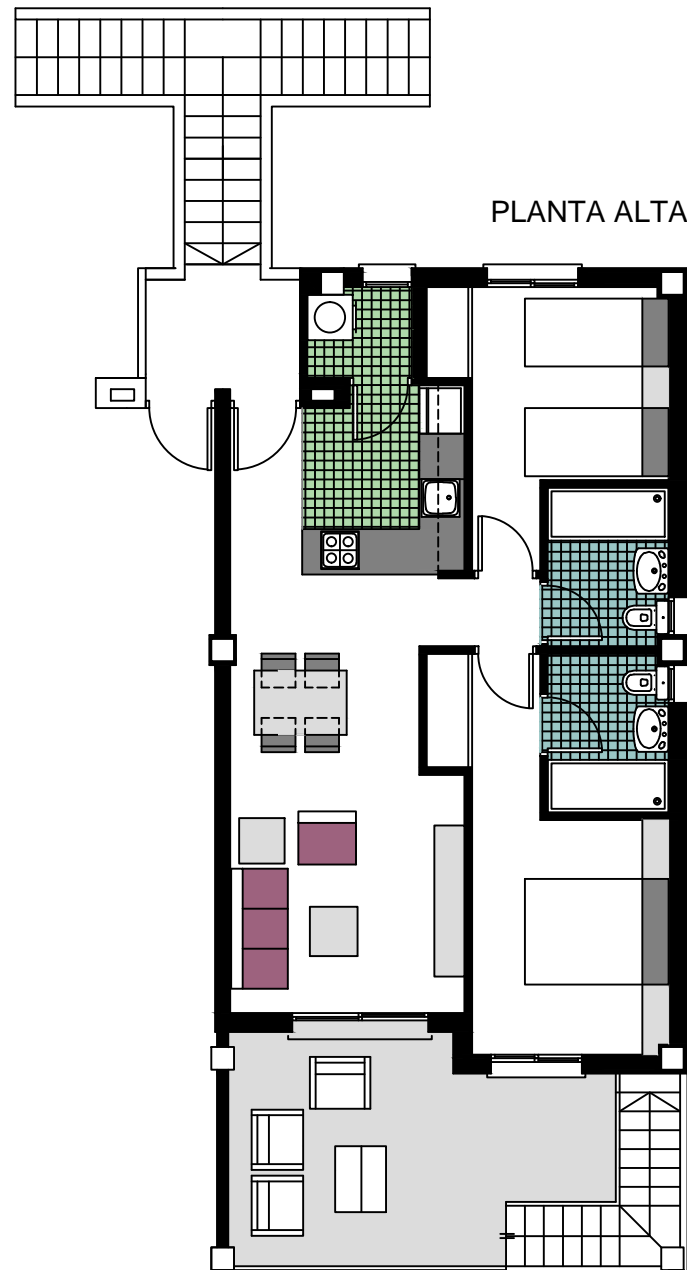
VIVIENDA. Nº 8.3
PLANTA ALTA

SUPERFICIES APROXIMADAS

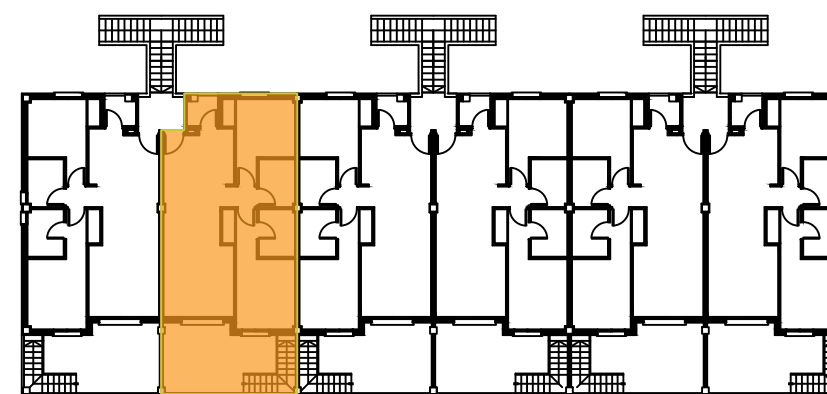
VIVIENDA TIPO 58.44
TERRZA DECUBIERTA 13.90
LAVADERO 2.14

TOTAL SUP.CONSTRUIDA 74.48

+ SOLARIUM 58.18



AVD. DE HOLANDA



8.3

