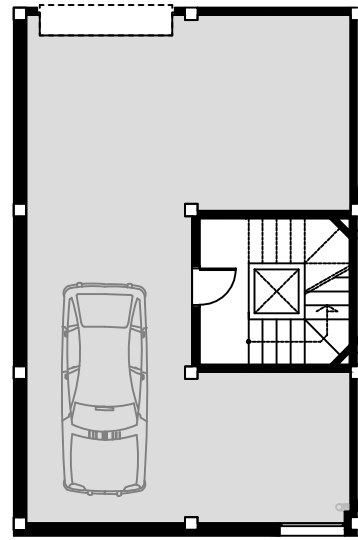
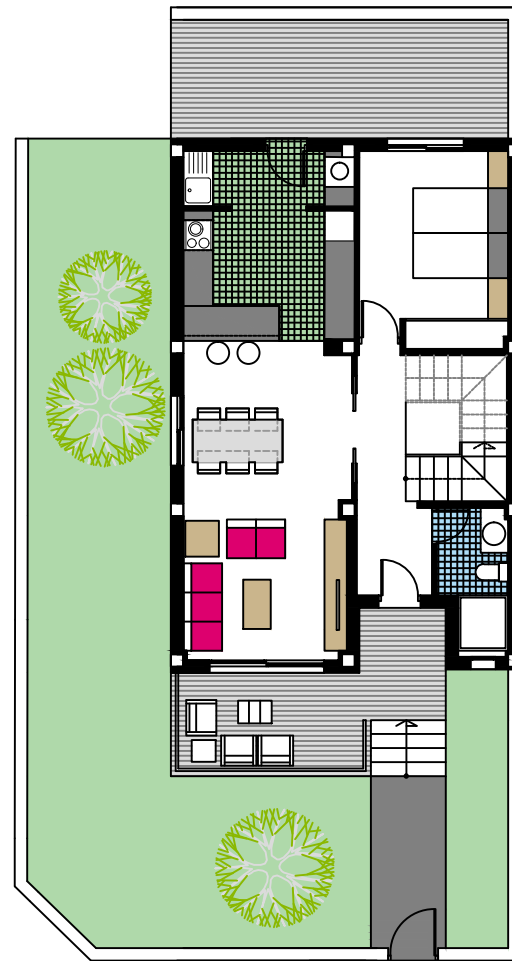


Nº.25

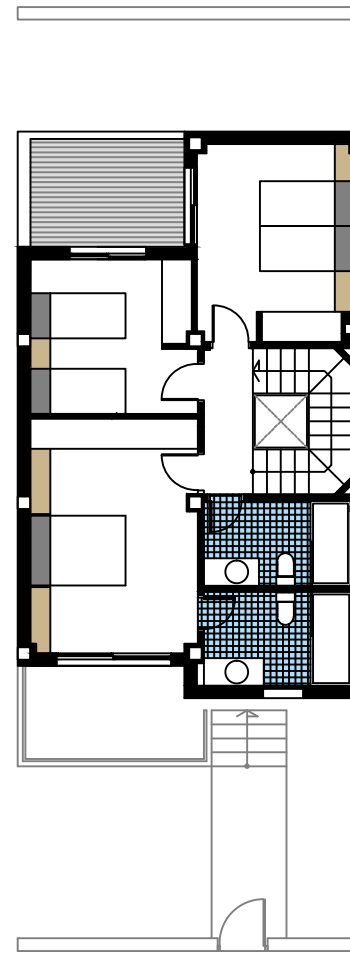
Calle Federico Martínez Pastor



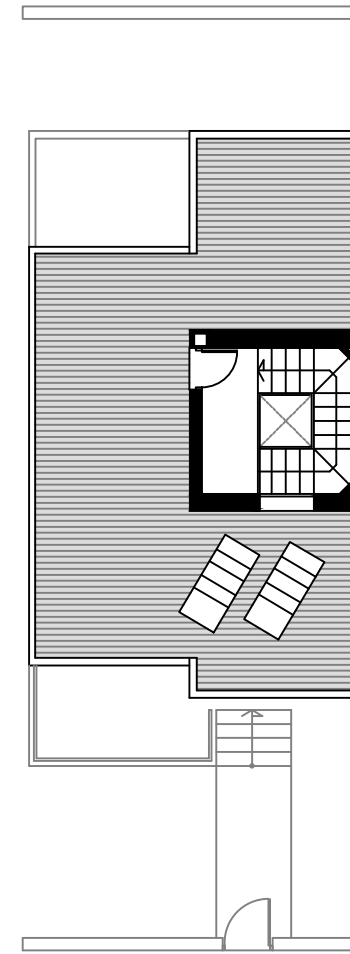
Pl.Sotano



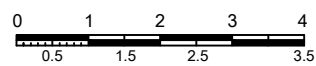
Pl.Baja



Pl.Alta



Solarium



Calles. Río Miño, Federico Vicente Pastor y Vicente Buigues Vives.
SAN PEDRO DEL PINATAR.MURCIA



DUPLEX Nº.25

SUPERFICIE APROXIMADAS m2

SOTANO	72.10
PLANTA BAJA	66.26
PLANTA PRIMERA	65.57
PLANTA CUBIERTA	5.45

SUPERFICIE CONSTRUIDA
(Incl.Sotano)..... 209.38
+Solarium Aprox..... 47.00

Sup.Parcela Aprox.....179,30

