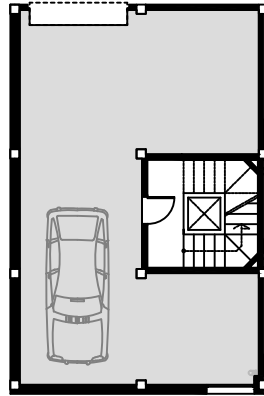
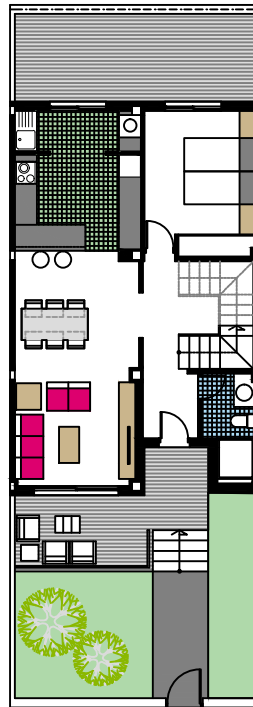


# Nº.29

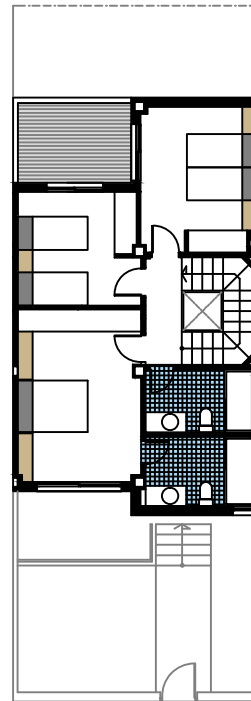
Calle Federico Martínez Pastor



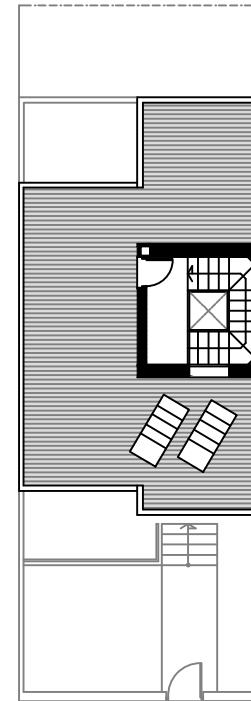
Pl. Sotano



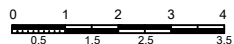
Pl. Baja



Pl. Alta



Solarium



Calles. Río Miño, Federico Martínez Pastor y Vicente Buigues Vives.  
SAN PEDRO DEL PINATAR.MURCIA



## DUPLEX Nº.29

### SUPERFICIE APROXIMADAS m2

SOTANO	70.83
PLANTA BAJA	64.45
PLANTA PRIMERA	64.41
PLANTA CUBIERTA	5.45

**SUPERFICIE CONSTRUIDA**  
(Incl.Sotano)..... 205.14  
+Solarium Aprox..... 47.00

Sup.Parcela Aprox.....127,88

