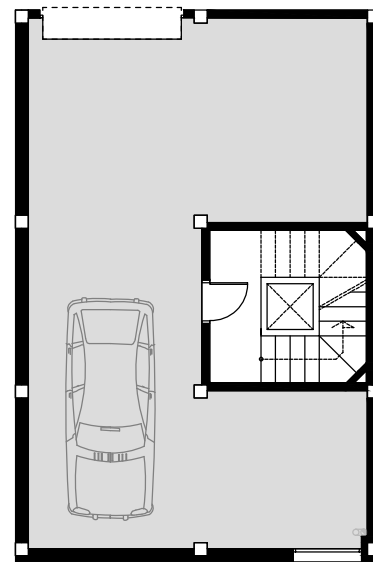
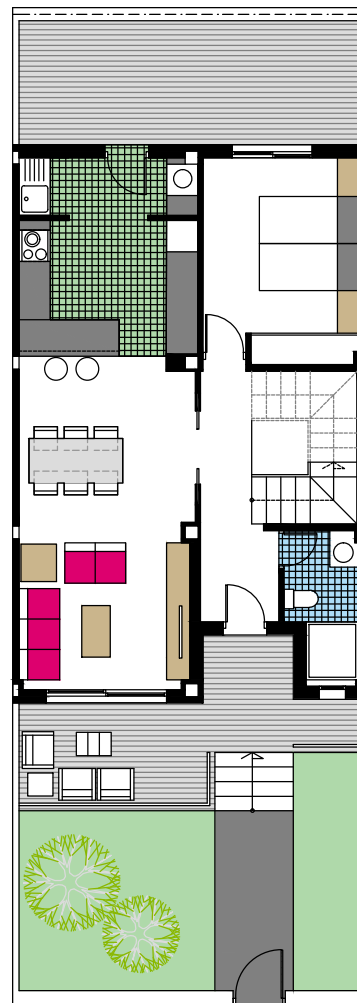


Nº.37

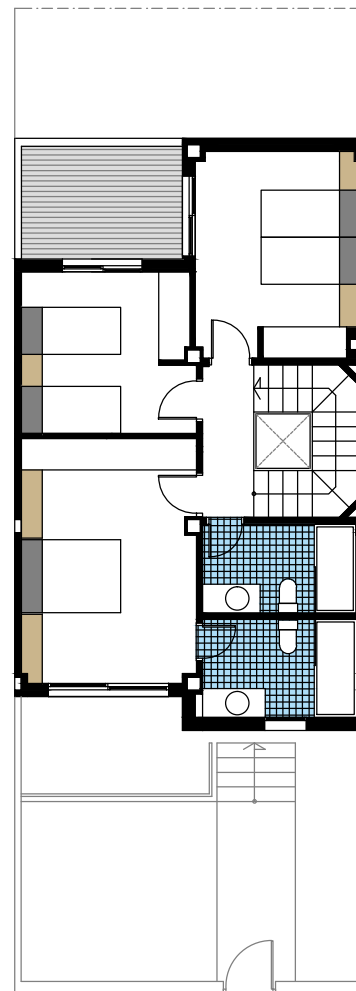
Calle Federico Martínez Pastor



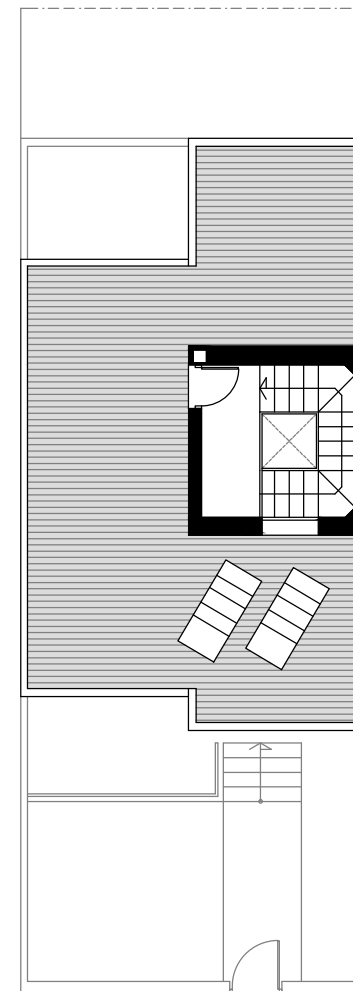
PI. Sotano



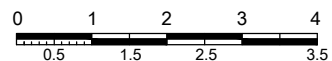
PI. Baja



PI. Alta



Solarium



Calles. Río Miño, Federico Martínez Pastor y Vicente Buigues Vives.
SAN PEDRO DEL PINATAR.MURCIA



DUPLEX Nº.37

**SUPERFICIE APROXIMADAS
m2**

SOTANO	72.10
PLANTA BAJA	65.59
PLANTA PRIMERA	65.31
PLANTA CUBIERTA	6.38

**SUPERFICIE CONSTRUIDA
(Incl. Sotano)..... 209.38
+Solarium Aprox..... 47.00**

Sup.Parcela Aprox.....130,26

