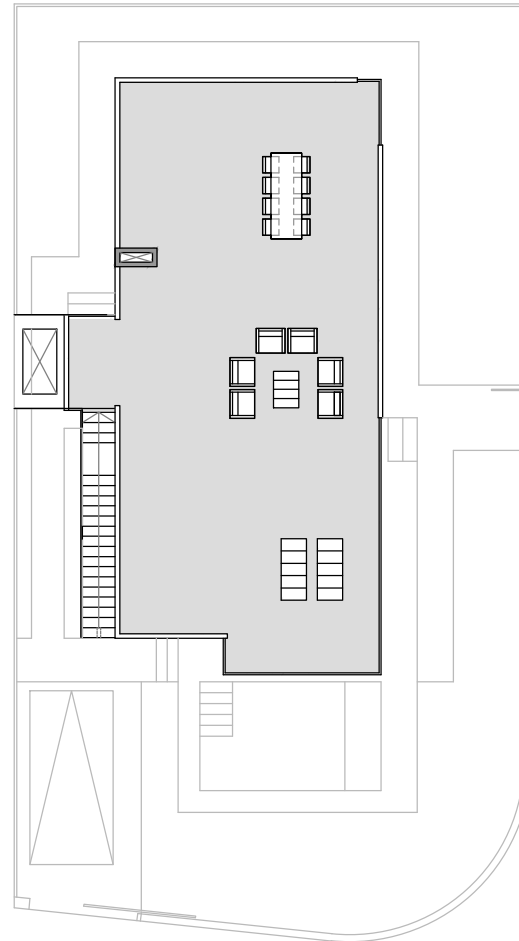


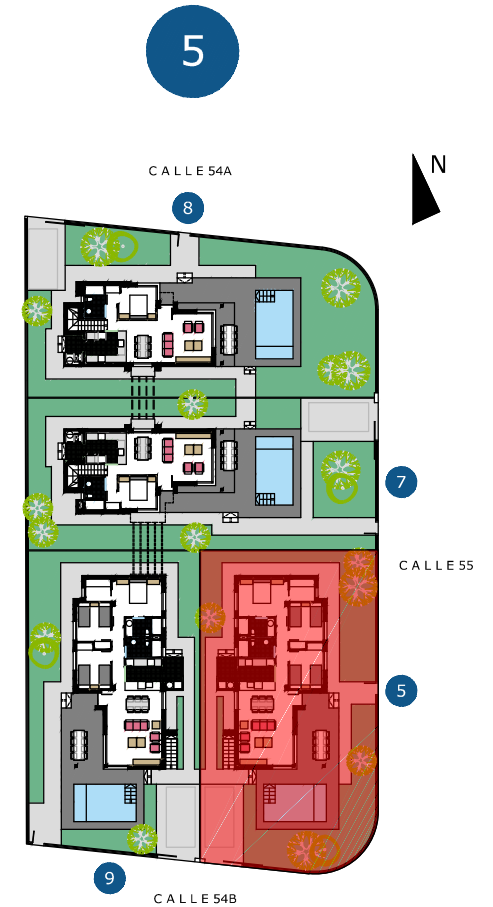
PLANTA BAJA



CALLE 55



SOLARIUM



VIVIENDA Nº5

VIVIENDA	99,05 m2
TERRAZA CUBIERTA	21,21 m2
GALERIA	3,72 m2
TOTAL CONSTRUIDA	123,98 m2
TERRAZA DESCUBIERTA. aprox.	17,46 m2
SOLARIUM	122,03 m2
PARCELA PRIVATIVA	358,60 m2

